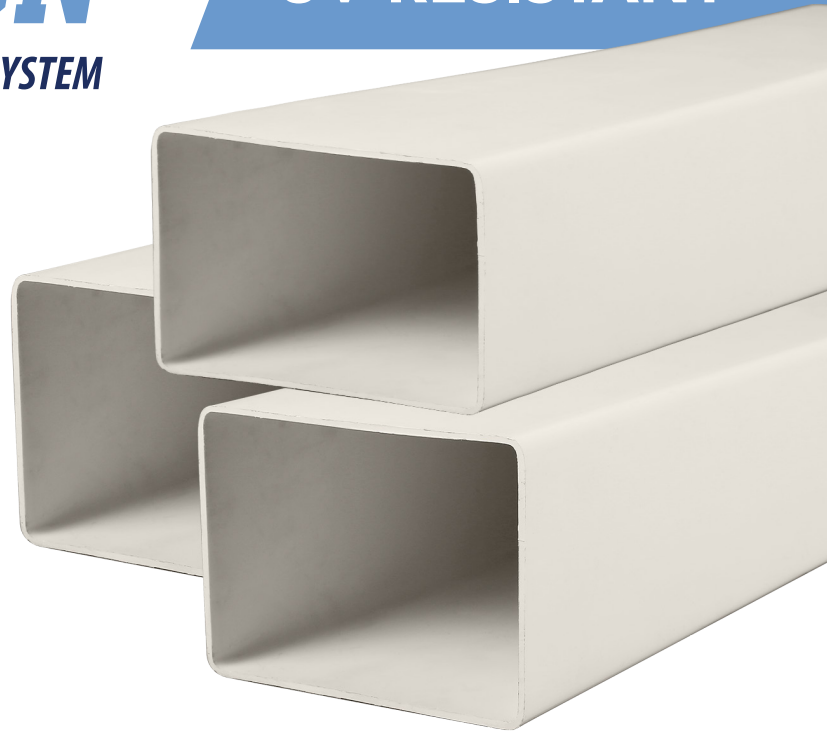




# DURA CON

**uPVC RAINWATER GUTTER & DOWNSPOUT SYSTEM**

**UV RESISTANT**



Patent No. 3-2017-000605

## ADVANTAGES

### Complete System

Gutter, downspout and full range of accessories including PVC Gutter Bracket and PVC Downspout clamp. White color is built-in permanently, however it can be painted to any color desired using latex paint. Clean, smooth and attractive appearance. Concealed brackets preserve the neatness and the clean line of the gutter. The smooth surface contributes to a better water flow.

### UV Resistant

The entire system is made from uPVC which incorporates an ultra-violet light inhibitor, formulated to stand up to strong sunlight and resist embrittlement.

### Maintenance Free

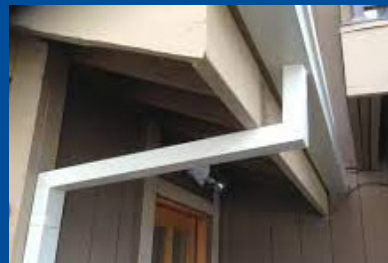
The rigid uPVC material will not corrode, chip, rust, blister, peel or wear away.

### Easy To Install

It is lightweight and uses basic tools to install the gutter and downspout system.

## APPLICATION

### Residential and Commercial

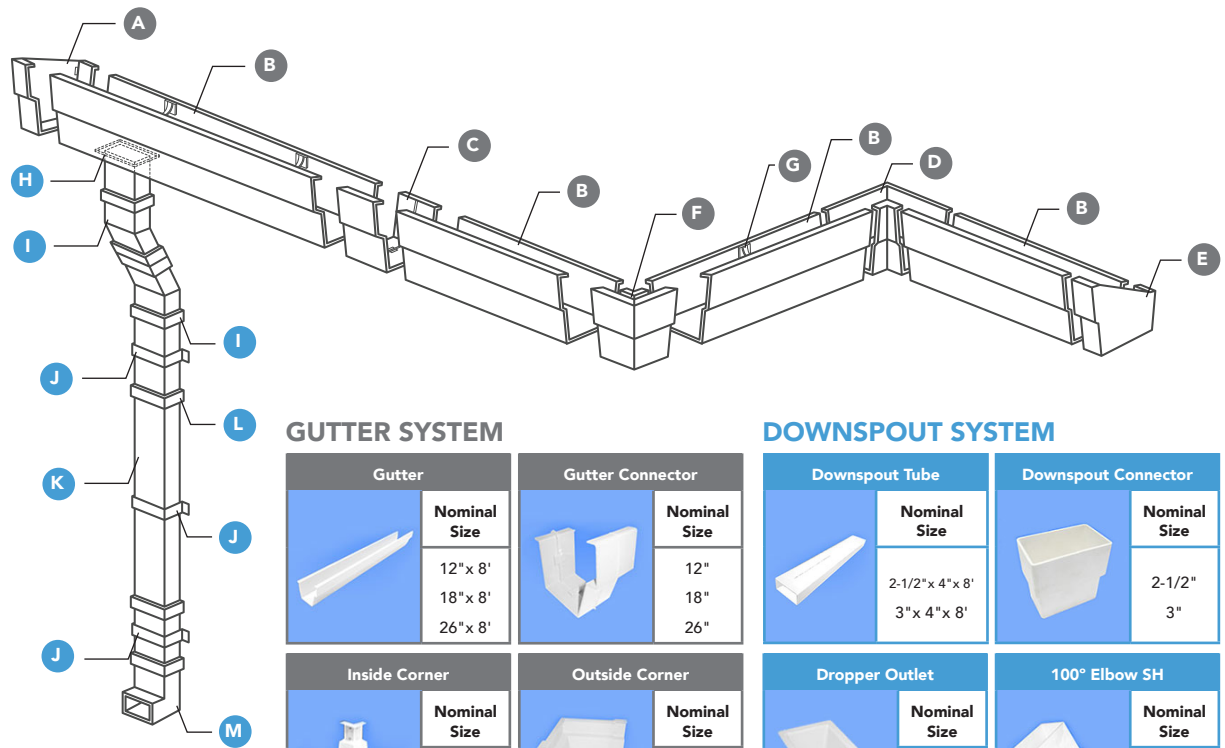


### Agriculture



Hydroponics

- A. Left End Cap
- B. Gutter Tube
- C. Gutter Connector
- D. Inside Corner
- E. Right End Cap
- F. Outside Corner
- G. Internal Bracket
- H. Dropper Outlet
- I. 100° Elbow SH
- J. Downspout Clamp
- K. Downspout Tube
- L. Downspout Connector
- M. 90° Elbow SH



### GUTTER SYSTEM

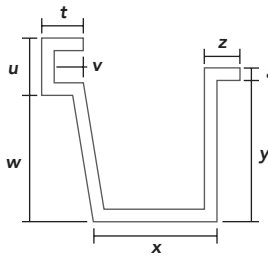
Gutter		Gutter Connector	
	Nominal Size 12"x 8" 18"x 8" 26"x 8"		Nominal Size 12" 18" 26"
Inside Corner		Outside Corner	
	Nominal Size 12" 18" 26"		Nominal Size 12" 18" 26"
Left & Right End Cap		Internal Bracket	
	Nominal Size 12" 18" 26"		Nominal Size 18"
External Bracket		Atlanta Low VOC PVC Cement	
	Nominal Size 12" 18" 26"		Nominal Size 100 cc 200 cc 400 cc

### DOWNSPOUT SYSTEM

Downspout Tube		Downspout Connector	
	Nominal Size 2-1/2"x 4"x 8" 3"x 4"x 8"		Nominal Size 2-1/2" 3"
Dropper Outlet		100° Elbow SH	
	Nominal Size 2-1/2" 3"		Nominal Size 2-1/2" 3"
90° Elbow SH		Clamp	
	Nominal Size 2-1/2" 3"		Nominal Size 2-1/2"x 4" 3"x 4"
Square to Round Adaptor		Dropper Outlet Round	
	Nominal Size 2" 3" 4"		Nominal Size 2" 3" 4"

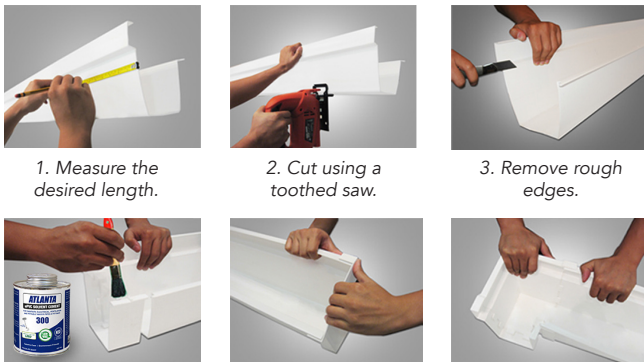
Note: For special production of any Fabricated Fittings please contact your assigned Atlanta Account Officer for more details.

### TECHNICAL DIMENSION



Size (in)	t (mm)	u (mm)	v (mm)	w (mm)
12	14	52	13	77
18	14	48	18	120
26	20	51	28	199
Size (in)	x (mm)	y (mm)	z (mm)	a (mm)
12	79	89	14	1.7
18	100	103	15	1.8
26	157	198	18	2

### INSTALLATION OF GUTTER AND ACCESSORIES



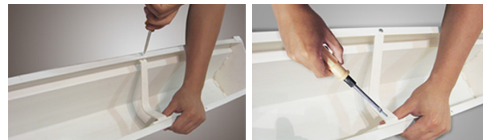
1. Measure the desired length.
2. Cut using a toothed saw.
3. Remove rough edges.
4. Attach the necessary fitting accessories such as gutter connector, end cap, inside and outside corner gutter using Atlanta Solvent Cement. (Hold assembly for 15 sec. before release.)

### INSTALLATION OF DROPPER OUTLET



1. Determine where to place the dropper outlet.
2. Put a mark on the gutter.
3. Cut-off marked portion using a drill or hack saw.
4. Insert dropper outlet & Apply solvent cement and hold the assembly for a min. of 15 sec.

### INSTALLATION OF DROPPER OUTLET



1. Install & align internal bracket at a distance.
2. Put a mark on the gutter.

3. Nail or screw the brackets including the gutter to supporting structures such as a fascia board.



35th Flr. Atlanta Center Bldg., No. 31 Annapolis St. Greenhills, San Juan City  
 Tel. No.: 8723-0781 to 88 | Fax No.: 8744-4703 / 8584-2997  
 Website: [www.atlanta.ph](http://www.atlanta.ph) Email Sales: [marketing@atlanta.ph](mailto:marketing@atlanta.ph)  
 Like Us on Facebook: [atlantaindustriesincorporated](https://www.facebook.com/atlantaindustriesincorporated)  
 Subscribe to Our Youtube Channel: Atlanta Industries Inc.

